






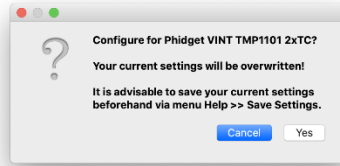
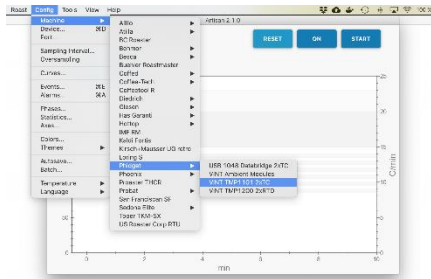


Item	Photo	Description	Quantity	Price
K-Type Thermocouple Probe		Inserted into Behmor following your hack	1	\$53.00
K-Type Thermocouple Connector: 3111_0		The package comes with both the male and female connectors. You will only need the female connector (circled in red) to plug in the probe above	1	\$4.00
K-Type Thermocouple Extension Wire: 3112_0 – Length 1 m		You will have to unscrew the female connector above and wrap each of these wires around the metal screws. Then, you will screw the top back on.	1	\$5.25
4x Thermocouple Phidget: TMP 1101_1		Connect the other end of the wires above to this Phidget.	1	\$35.00
Phidget Cable 60cm: 3002_0		This cable plugs right into the Phidget above and will connect to the VINT Hub below	1	\$2.00
VINT Hub Phidget: HUB0002_0		The other end of the cable above plugs into this.	1	\$40.00
Mini USB Cable		I had an extra one of these laying around, but I linked what you need here. This connects to a USB port on your computer.	1	\$3.00

- Then, you will need to follow these instructions to install the free [Phidget Control Panel software](#).
- You will also need to install the free [Artisan Scope software](#).
- In Artisan, you will need to set it up to detect the Phidget. [This information](#) from Artisan helped me:

Start Artisan and select the menu

Config >> Machine >> Phidget >> VINT TMP1101 2xTC



TMP1101 Set – Artisan setup

To test the Artisan setup for the TMP1101 set, just press ON and check if the ET and BT LCDs on the right side of the window report the correct readings.

- Below are pics of my setup

